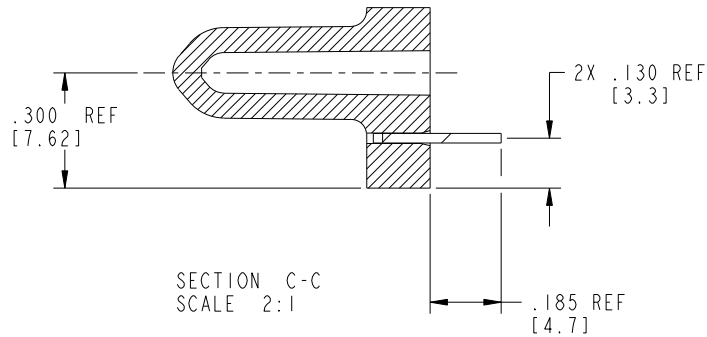
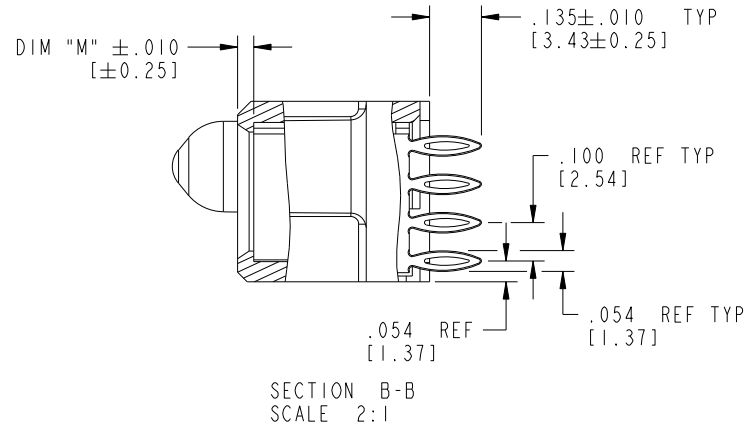
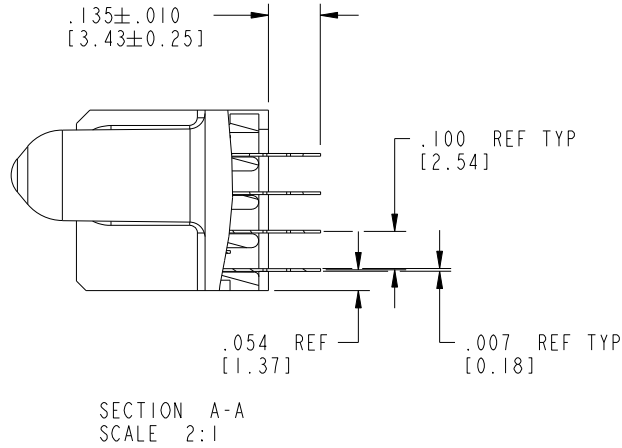


Tous droits strictement réservés. Reproduction ou communication a des tiers interdite sous quelque forme que ce soit sans autorisation écrite du propriétaire. Propriété de c FCI. Droits de reproduction FCI.

All rights strictly reserved. Reproduction or issue to third parties in any form whatever is not permitted without written authority from the proprietor. Property of FCI. Copyright FCI.



PRODUCT NUMBER
51750-056--
NOTE: ③



mat'l code		SEE NOTE 2		tolerances unless otherwise specified		CUSTOMER		FCI	
ltr	ecn no.	dr	date	linear	.XX±.01/0.X±0.3	COPY		www.fciconnect.com	
C				projection	.XXY±.005/0.XX±0.13	INCH/MM		title 6P + 60S + 6P	
				angles	.XXX±.0020/0.XXX±0.051	1:1		VERTICAL PRESS-FIT RECEPT	
				dr	0°±2°	scale		product family PwrBlade	
				enr	T. BRUNGARD 02/13/04	A		code 213	
				enr	M. GRAY 02/13/04	51750-056		sheet 2 of 4	
				chr	M. GRAY 02/13/04				
				appd	M. GRAY 02/13/04				
sheet index	revision sheet								

Pro/E

PDM: Rev: C

STATUS: Released

Printed: Sep 20, 2008

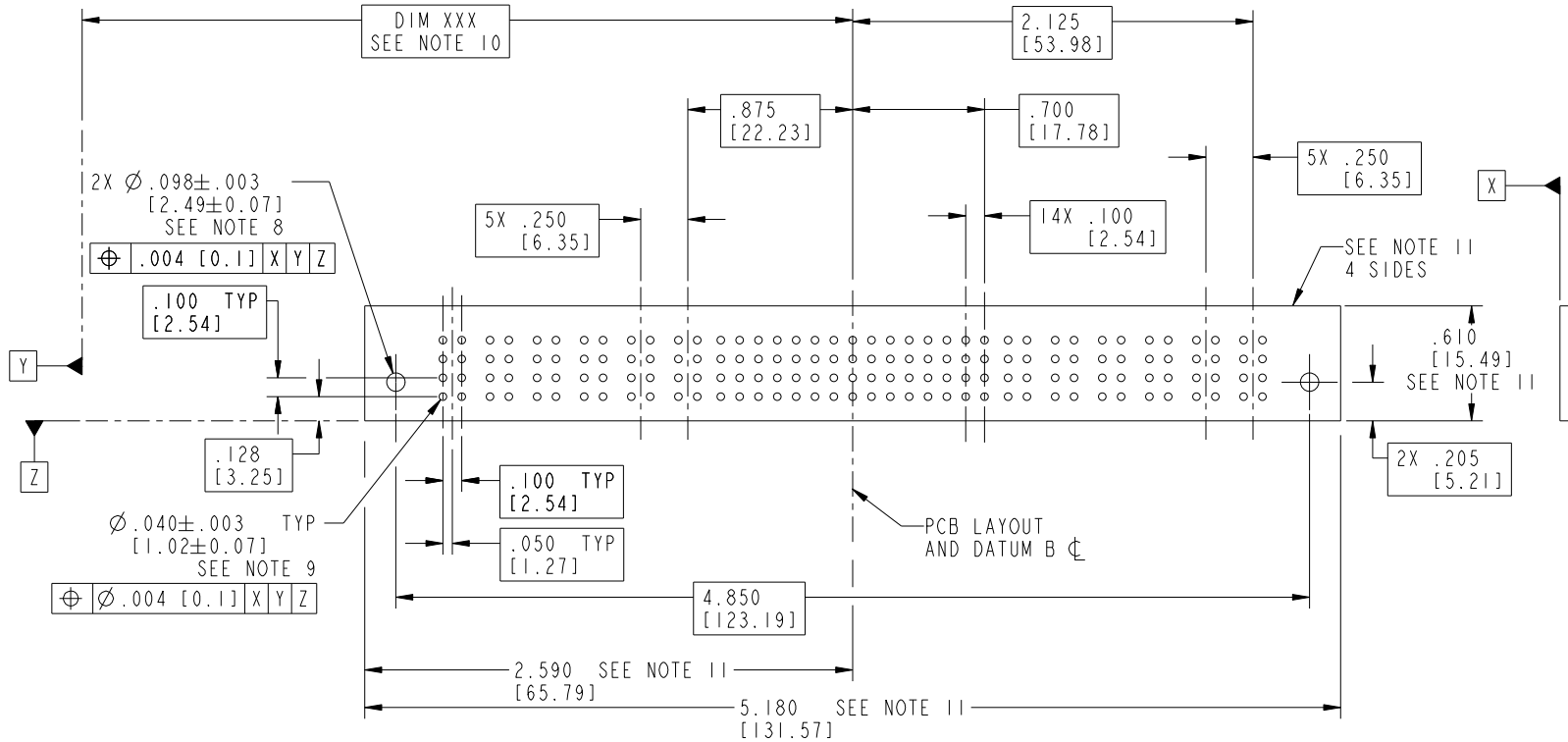
Tous droits strictement réservés. Reproduction ou communication a des tiers interdite sous quelque forme que ce soit sans autorisation écrite du propriétaire. Propriété de c FCI. Droits de reproduction FCI.



All rights strictly reserved. Reproduction or issue to third parties in any form whatever is not permitted without written authority from the proprietor. Property of FCI. Copyright FCI.

PRODUCT NUMBER

51750-056--
NOTE: ③



RECOMMENDED PCB LAYOUT

mat'l code		SEE NOTE 2		tolerances unless otherwise specified		CUSTOMER		 www.fciconnect.com	
ltr	ecn no.	dr	date	linear	.XX±.01/0.X±0.3	COPY		title	
C				angles	.XXX±.005/0.XX±0.13	projection		6P + 60S + 6P	
				dr	.XXX±.0020/0.XXX±0.051			VERTICAL PRESS-FIT RECEPT	
				enr	0°±2°	INCH/MM		product family	
				chr	T. BRUNGARD 02/13/04	scale		PwrBlade	
				appd	M. GRAY 02/13/04	1:1		code	
					M. GRAY 02/13/04			213	
					M. GRAY 02/13/04			sheet	
sheet index	revision sheet							3 of 4	
								A 51750-056	

cage code 22556

Pro/E

PDM: Rev: C

STATUS: Released

Printed: Sep 20, 2008

Tous droits strictement réservés. Reproduction ou communication a des tiers interdite sous quelque forme que ce soit sans autorisation écrite du propriétaire. Propriété de c FCI. Droits de reproduction FCI.



All rights strictly reserved. Reproduction or issue to third parties in any form whatever is not permitted without written authority from the proprietor. Property of FCI. Copyright FCI.

1 | 2

3

4

PRODUCT NUMBER
51750-056--
NOTE: ③

NOTES:

1. DIMENSIONS AND TOLERANCES ARE IN ACCORDANCE WITH ASME Y14.5M, 1994 UNLESS OTHERWISE SPECIFIED.

CONNECTOR NOTES:

② HOUSING MATERIAL: UL 94 V-0 GLASS FILLED HIGH-TEMP THERMOPLASTIC
POWER CONTACT MATERIAL: COPPER ALLOY
SIGNAL PIN MATERIAL: COPPER ALLOY

△ ③. SEE ITEM 7 & 8 IN PRINT 10064183 FOR PLATING SPEC OF 51750-056 AND 51750-056LF RESPECTIVELY.

④ MANUFACTURER'S NAME, P/N, AND DATE CODE TO APPEAR ON THIS SURFACE.

5. PRODUCT SPECIFICATION GS-12-149.
APPLICATION SPECIFICATION BUS-20-067.

6. PACKAGED IN TRAYS.

PCB NOTES:

7. ALL HOLE DIAMETERS ARE FINISHED HOLE SIZE.

⑧ MOUNTING HOLES, WHERE APPLICABLE, ARE UNPLATED.

⑨ $\varnothing .0453 \pm .0010$ [1.151 ± 0.025] DRILLED HOLES PLATED WITH
.0003 [0.008] MIN SnPb OVER .001 [0.03]
TO .003 [0.08] Cu PLATING TO ACHIEVE
 $\varnothing .040 \pm .003$ [1.02 ± .07] HOLE.

⑩ "DIM XXX" TO BE DETERMINED BY THE CUSTOMER.

⑪ CONNECTOR KEEP-OUT ZONE.

12. A △ SYMBOL WILL BE NEXT TO ANY DIMENSION, VIEW, OR NOTE WHICH HAS BEEN MODIFIED WITH THE CURRENT DRAWING REVISION.

mat'l code				SEE NOTE 2		tolerances unless otherwise specified		CUSTOMER		FCI	
ltr	ecn no.	dr	date	linear	.XX±.01/0.X±0.3	projection		COPY		www.fciconnect.com	
C				angles	.XXX±.005/0.XX±0.13 .XXX±.0020/0.XXX±0.051 0°±2°	INCH/MM		title		6P + 60S + 6P	
				dr	T. BRUNGARD 02/13/04	scale		product family		code	
				enrg	M. GRAY 02/13/04	1:1		PwrBlade		213	
				chr	M. GRAY 02/13/04			size		sheet	
				appd	M. GRAY 02/13/04			A 51750-056		4 of 4	
sheet index		revision sheet									

A

A

B

B

1 | 2

Pro/E

PDM: Rev: C

STATUS: Released

Printed: Sep 20, 2008

cage code 2856

4